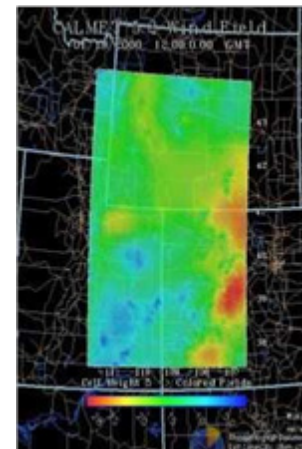




## CALPUFF Modeling

- Near-field impacts
- Long-range transport
- Visibility assessments (regional and haze)
- Class I and II PSD Increment analyses
- Secondary pollutant formation
- Deposition (wet and dry)
- PSD and AQRV impacts

MSI has extensive CALPUFF/CALMET/CALPOST experience including three computer programmers on staff to reformat meteorological data files for use by CALMET. MSI also has six meteorologists, including two CCM's and PSD permitting experts, on staff to quality assure the model input data. We have an in-house library of upper air and surface meteorological data and use the latest visualization software to compile and quality assure the extensive meteorological datasets. Our permitting staff have extensive experience interfacing with the Federal Land Managers and EPA and have submitted and obtained approval of numerous modeling protocols.



Meteorological Solutions Inc. staff have the critical combination of both extensive programming experience and exhaustive knowledge of meteorological data to provide our clients with unsurpassed modeling capabilities.



## CALPUFF Modeling

MSI programming staff can prepare all needed input files for the CALMET preprocessor including:

- SURF.DAT
- GEO.DAT
- UP.DAT
- PRECIP.DAT
- OZONE.DAT
- MM5.DAT

MSI meteorologists and programmers can perform the arduous task of generating these files for you while providing the meteorological insight and quality assurance experience that will assure an accurate modeling simulation. We own 2001-2003 EPA approved 36km resolution MM5 data for the entire continental United States for use with CALMET.

## Contact Us

Meteorological Solutions Inc.  
2257 South 1100 East Suite 203  
Salt Lake City, UT 84106

Phone: 801.474.3826

Fax: 801.474.0766

E-mail: [info@metsolution.com](mailto:info@metsolution.com)

Web: [www.metsolution.com](http://www.metsolution.com)

Other Services:

- [Meteorological and Wind Energy Towers](#)
- [Calibrations and Audits](#)
- [Ambient Monitoring](#)
- [Tracer Studies](#)
- [Air Quality Permitting](#)
- [Dispersion Modeling](#)
- [CALPUFF Modeling](#)
- [Remote Data Management](#)
- [Weather Forecasting](#)
- [Total Storm Rainfall Estimates](#)
- [Micrometeorological Field Measurements](#)